

# Retrofit SCR System for NO<sub>x</sub> Control From Heavy-Duty Mining Equipment

2009 MDEC Conference  
Toronto

October 7, 2009

M. A. Mannan  
Nett Technologies Inc.

MDEC 2009



## Presentation Outline

- Background
- NO<sub>x</sub> Control
- SCR System Description
- SCR Retrofit Examples
- Case Study – Installation of SCR Retrofit System in an Underground Mine

MDEC 2009



## Background

Diesel engines are the primary workhorse for the mining industry. While diesel engines have many advantages, they have the disadvantage of emitting particulate matter (PM) and oxides of nitrogen ( $\text{NO}_x$ ).

Great concern about PM and  $\text{NO}_2$  in an underground mine is leading to the use of diesel exhaust aftertreatment systems such as diesel particulate filters (DPF) and selective catalytic reduction (SCR).

As established by MSHA/ACGIH, in a mine the exposure of nitrogen dioxide ( $\text{NO}_2$ ) and carbon monoxide (CO) cannot exceed 5/3 parts per million (ppm) and 50 ppm/25 ppm respectively.

MDEC 2009



## Why $\text{NO}_x$ Control

Nitrogen oxides ( $\text{NO}_x$ ), one of the most troublesome emissions from the diesel engine, is the generic term for a group of highly reactive gases, all of which contain nitrogen and oxygen in varying amounts.  $\text{NO}_x$  contributes to:

- the formation of ground-level ozone (smog) – which can trigger respiratory problems
- the formation of acid rain
- atmospheric particles, that cause visibility impairment
- nutrient overload that deteriorates water quality
- reactions which form toxic chemicals

MDEC 2009



## NO<sub>x</sub> in Underground Mining

- NO<sub>x</sub> is composed of **nitric oxide** (NO) and **nitrogen dioxide** (NO<sub>2</sub>)
- NO<sub>2</sub> is the main concern in underground mines
- Diesel engines are a major source of NO<sub>2</sub> emissions in mines
- NO<sub>2</sub>: NO<sub>x</sub> ratio:
  - About 5% in naturally aspirated engines
  - Up to 15-20% in turbocharged engines

MDEC 2009



## Options for NO<sub>x</sub> Control

Technology	NO <sub>x</sub> Reduction	Comments
Engine Repower or Upgrade	80% on-road 60% off-road	Ultra-low NO <sub>x</sub> engines available only in 2010 (on-road) and ~2014 (off-road).
Exhaust Gas Recirculation (EGR)	30-40%	Applicable mostly to OEM applications. Retrofit application is problematic.
Lean NO <sub>x</sub> Catalysts (HC-SCR)	10-50%	Higher conversions possible only in active systems with fuel injection. Fuel economy penalty.
NO <sub>x</sub> Adsorbers (Traps)	60-80%	Applicable to OEM applications only. Require tight integration with the engine management system.
Fuel Emulsions	10-20%	Negative engine performance impact. Limited to centrally fueled fleets.
Selective Catalytic Reduction (Urea-SCR)	65-90%	Widely used in OEM applications. Retrofit systems in the process of EPA verification.

MDEC 2009



## Selective Catalytic Reduction (SCR)

SCR has emerged as the preferred solution for reducing NO<sub>x</sub> in heavy-duty vehicles. NO<sub>x</sub> is reduced over the SCR catalyst through chemical reactions with a reducing agent, such as urea (commonly referred to as DEF in North America). Urea solution is carried in an onboard tank and injected upstream of the SCR catalyst.

- Typical reaction is given below:



- The final products are nitrogen (N<sub>2</sub>) and water (H<sub>2</sub>O)

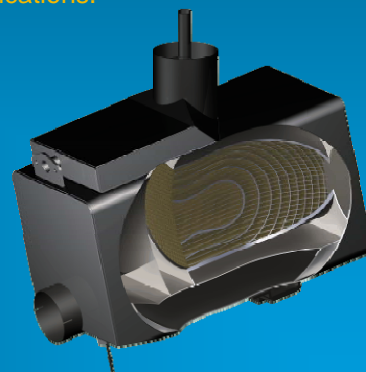
MDEC 2009



## BlueMAX™ SCR System

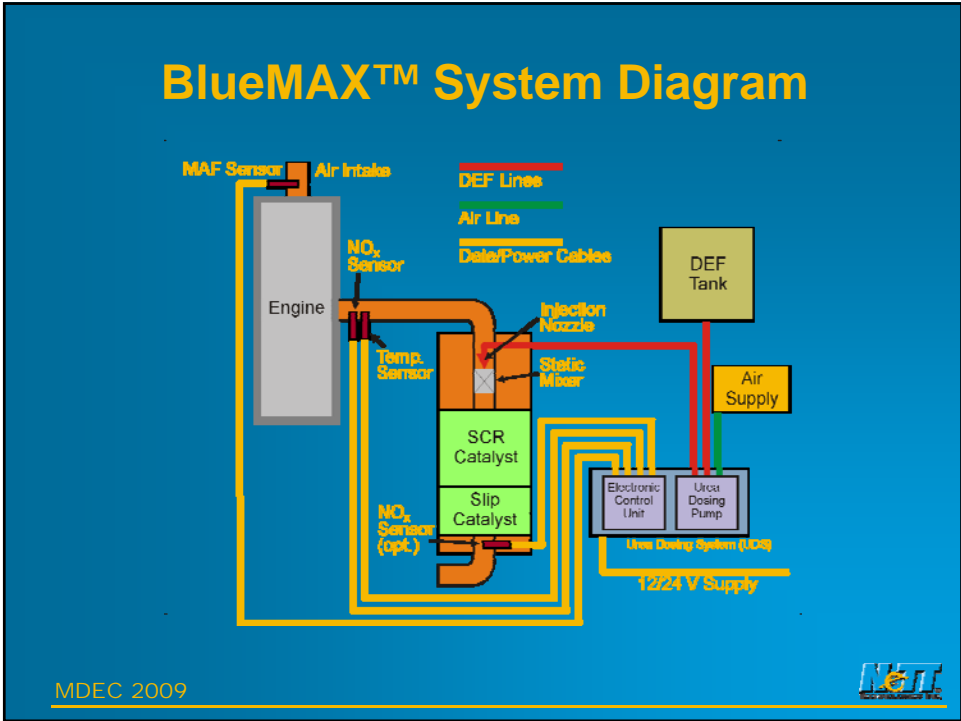
Nett BlueMAX™ is a retrofit urea-SCR system designed to control oxides of nitrogen (NO<sub>x</sub>) emissions from diesel engines in on-road, non-road, mining, and stationary applications.

The urea dosing strategy is based on engine-out NO<sub>x</sub> emissions measured with a NO<sub>x</sub> sensor before the SCR catalyst. The sensor based control strategy makes the system suitable for both original equipment and retrofit applications.

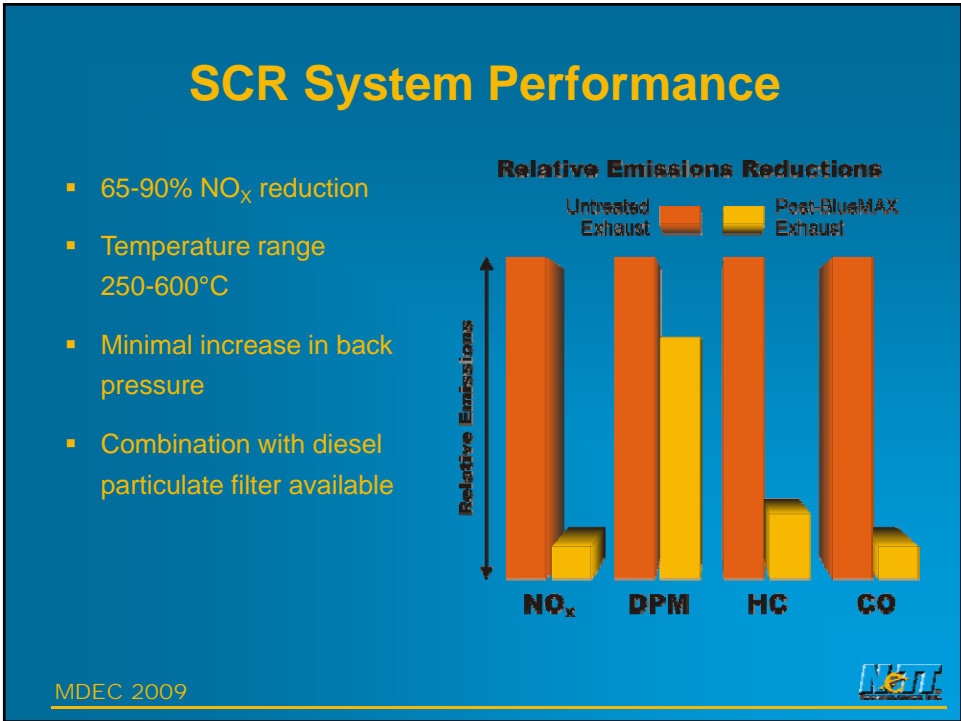


MDEC 2009



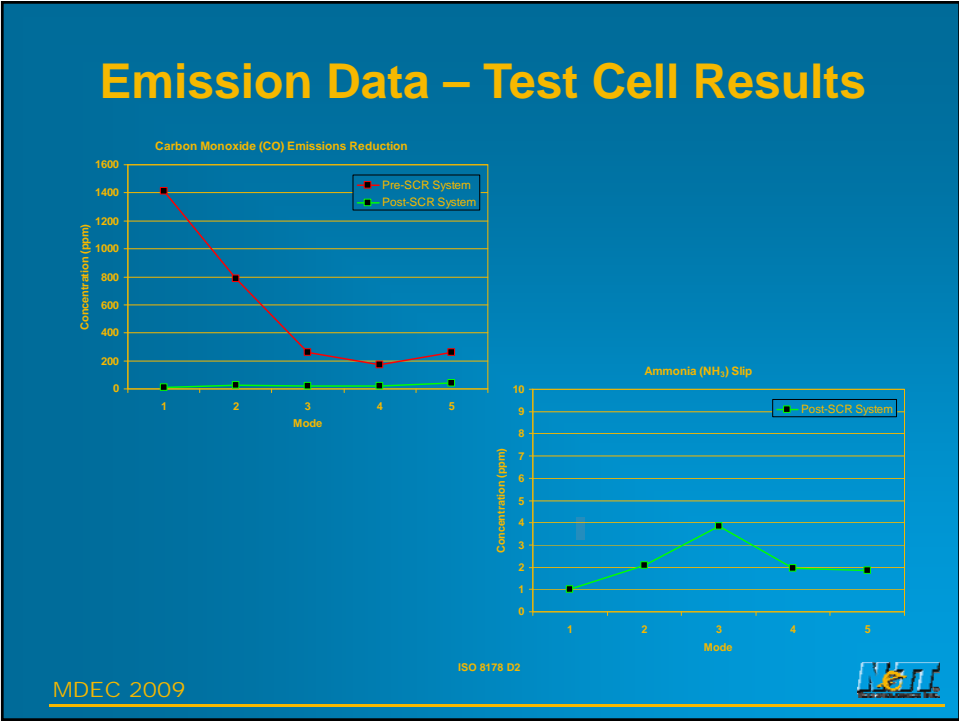
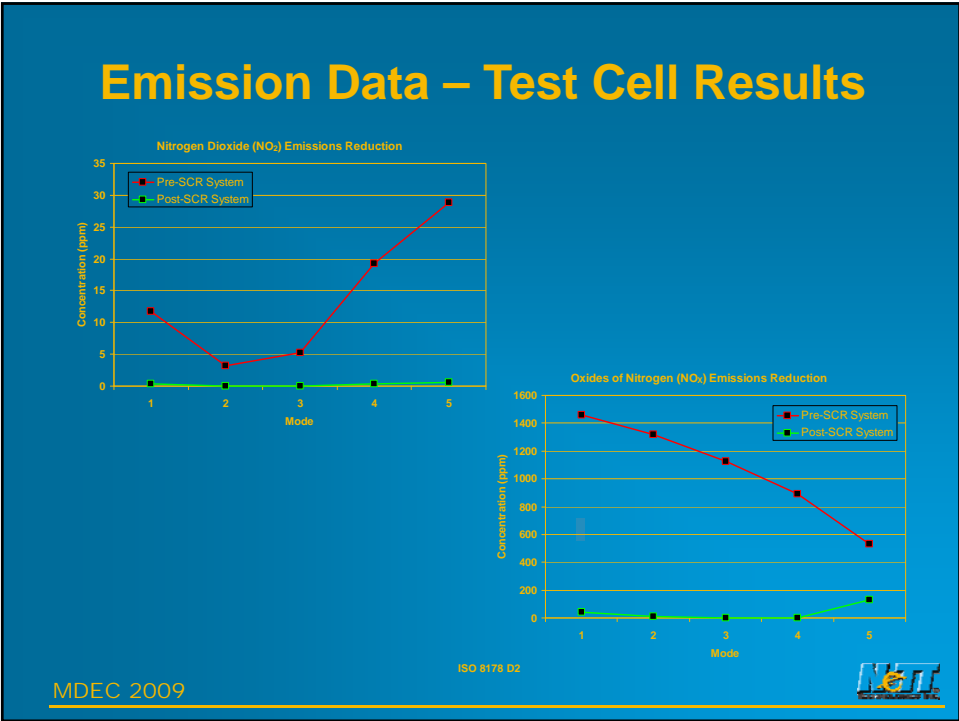


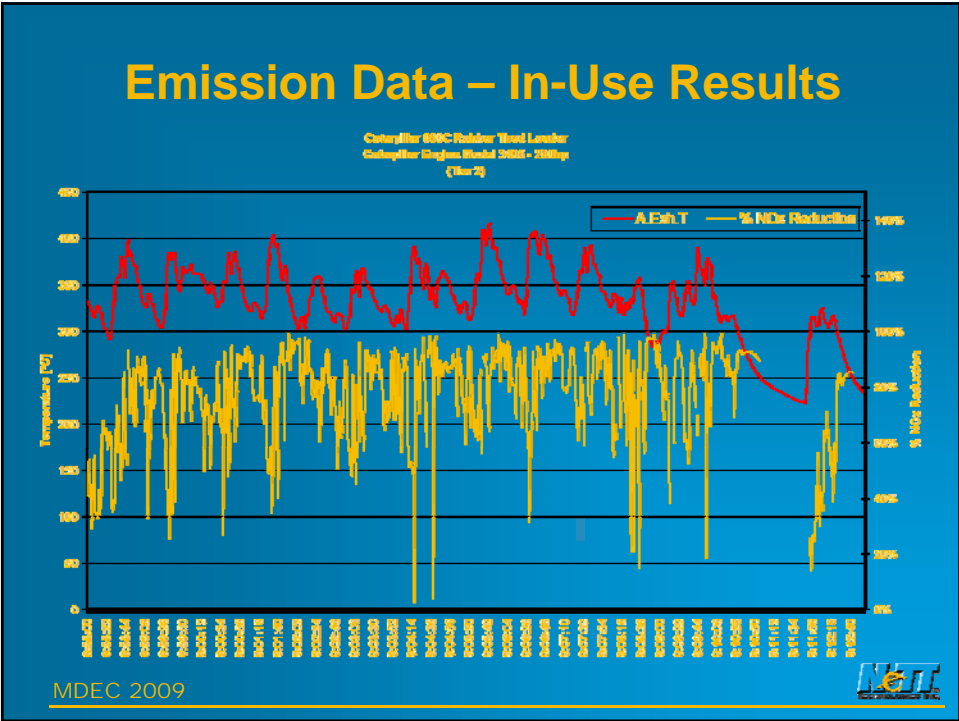
MDEC 2009



MDEC 2009







## Urea Consumption

The Nett BlueMAX™ system requires that aqueous urea solution (in the form of a 32.5% water-based solution) be carried in an on-board storage tank and that it is periodically replenished.

Urea consumption can vary from 1-5% (by vol.) relative to the diesel fuel consumption. For every 1g/bhp-hr of NO<sub>x</sub> that is reduced, the amount of urea consumed is equal to ~0.9% of the diesel fuel consumed. So a 2g/bhp-hr NO<sub>x</sub> reduction would require a urea consumption of approximately 1.8% relative to the diesel fuel consumption.



# SCR Retrofit Examples



Caterpillar 980C Loader  
BlueMAX™ SCR System



Caterpillar 330B Excavator  
BlueMAX PLUS™ SCR System

MDEC 2009



# SCR Retrofit Examples



Volvo 64FT Transfer Truck  
BlueMAX™ SCR System



MDEC 2009





## Case Study – SCR Retrofit Installation Underground Mine

This section of presentation summarizes Sifto Canada Corporation collaborative effort with CANMET Mining and Mineral Science Laboratories to reduce emissions from diesel engines.

The objective of this demonstration and evaluation effort is to identify cost effective retrofit solutions to lower NO<sub>2</sub> emissions from heavy-duty trucks operating in underground mines.

MDEC 2009



## Sifto Salt

Sifto Salt, a division of Sifto Canada Corp., is located in Goderich, Ontario and presently employs over 500 people.

The mine is at a depth of 1,800 ft below surface and extends 5 km under the lake Huron. The ceilings in the production areas are 60 ft high.



MDEC 2009



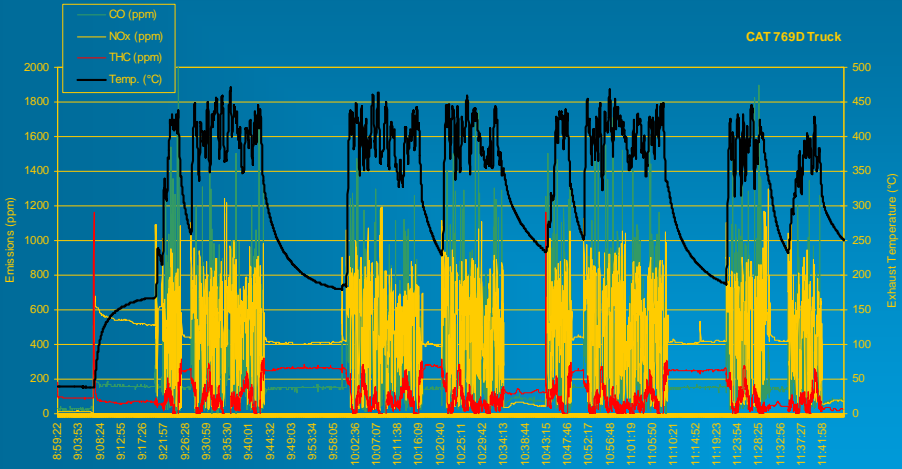
# Candidate Vehicle

## Caterpillar 775E Mining Truck

Engine make      Caterpillar  
Engine model     3412 E  
Engine hp        544 kW (730 hp)  
Displacement    27L  
Model year       2005



# Baseline Emissions



# SCR Retrofit Solution - BlueMAX™



Original Muffler System

Caterpillar 775E Mining Truck  
Sifto Salt



Nett BlueMAX™ SCR System

MDEC 2009



# BlueMAX™ Installation – 775E



DEF Tank



Dosing Unit

MDEC 2009



## BlueMAX™ Installation – 775E



Nett BlueMAX™ SCR Retrofit System

MDEC 2009



## Contact Information

**Nett Technologies Inc.**  
2-6707 Goreway Drive  
Mississauga, ON  
L4V 1P7  
**(800) 361-6388**  
[www.nett.ca](http://www.nett.ca)

M.A. Mannan  
(905) 672-5453 ext. 121  
e-mail: [mamannan@nett.ca](mailto:mamannan@nett.ca)

MDEC 2009

